



# The Three Villages Magazine

COVERING GREAT AMWELL, ST MARGARETS AND STANSTEAD ABBOTTS



Price: £1.00

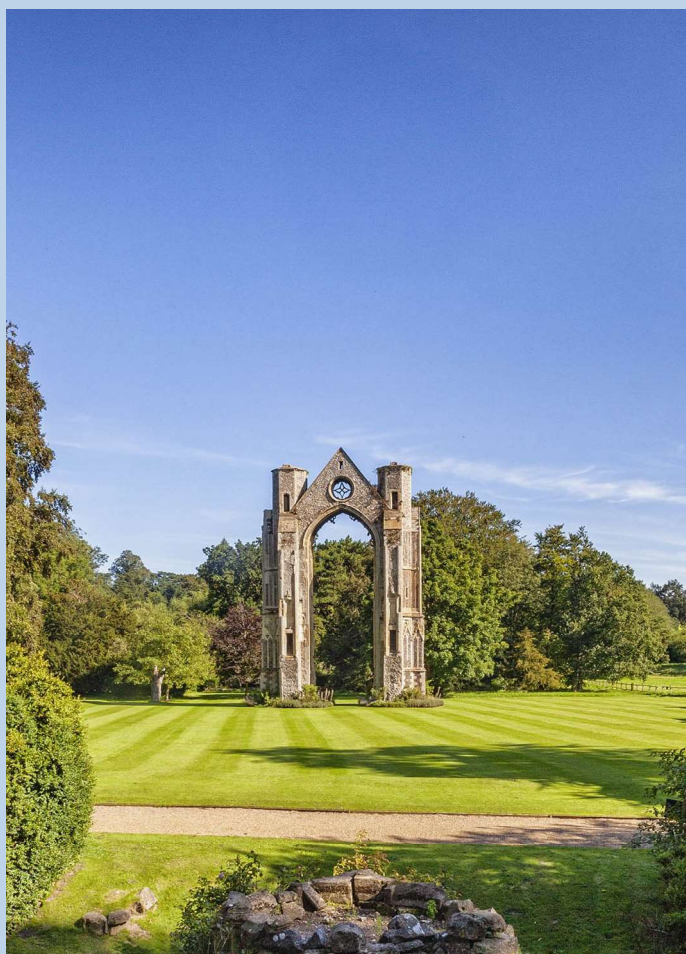
Issue 3

September 2022

# PILGRIM WALK FROM WALTHAM ABBEY TO WARE

FRIDAY 16<sup>TH</sup> SEPTEMBER

Pilgrims are invited to join a one-day guided walk, led by Andy Bull, author of the newly published guidebook to the London to Walsingham Camino, and supported by the Confraternity of St James, whose members have helped research the path.



## SCHEDULE

**10am**

Gather in Waltham Abbey Church

**10.30am**

Begin walk to Broxbourne  
via the River Lea Country Park (6 miles)

**12.30–1.00pm**

Lunch at St Augustine's Church, Broxbourne

**1.00pm**

Continue walk to Great Amwell (5.5 miles)

**3.30pm**

Arrive at St John's Church, Great Amwell

**4pm**

Continue walk to Ware (2 miles)

**4.45pm**

Arrive at St Mary's Church, Ware

You are welcome to join at the start of the walk, at Broxbourne or Great Amwell.

To register your interest, and for full details of the day, including transport links, contact Andy Bull ([andyzbull@gmail.com](mailto:andyzbull@gmail.com)).

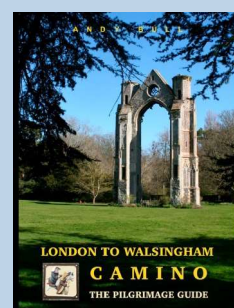


**CAMINO PILGRIM  
THE CONFRATERNITY  
OF ST JAMES**

*London to Walsingham Camino  
The Pilgrimage Guide*

By Andy Bull

(Trailblazer Publications, 2022)  
ISBN: 9781912716319





# The Three Villages Magazine

COVERING GREAT AMWELL, ST MARGARETS AND STANSTEAD ABBOTTS

Issue 3

September 2022

## From the Editor...



Cover: 'Stanstead View'  
© Paul Marriott

Welcome to the third issue! The Three Villages Magazine is a joint venture between the three Parish Councils of Great Amwell, St Margarets and Stanstead Abbots, and The 3 Churches Benefice. It is intended as a new community resource that is accessible to everyone. The online and print formats provide a platform to share local news and information, showcase local talent and support local businesses.

Within this issue, along with our regular items, we have the next instalment of Our Historic Churches series, a Community Spotlight on the new Community Hub Drop-in at St Margarets' Parish Church, an article from East & Herts Air Ambulance and lots more!

The magazine is issued quarterly with publication in March, June, September and December. If you wish to contribute to the last issue this year, the deadline is 3<sup>rd</sup> October (December issue). Please send all submissions to [print.threevillagesmagazine@gmail.com](mailto:print.threevillagesmagazine@gmail.com).

Every issue, the photograph used on the front cover is selected from a local photographer. This issue's cover features the work of Paul Marriott from High Flying Drone Shots. The stunning aerial shot really captures the beauty of the area. Do take a look at their website for more information about the services they offer ([www.highflyingdronesshots.co.uk](http://www.highflyingdronesshots.co.uk)). If you would like to enter your work for the next cover, please send your photograph(s) to [threevillagesmagazine@gmail.com](mailto:threevillagesmagazine@gmail.com).

Continued thanks are offered to Willowthorpe Care Home, our kind sponsors, and East Herts District Council for their contribution.

Please do check out our website ([www.thethreevillages.com](http://www.thethreevillages.com)), subscribe to our News & Events blog for all live events and important up-to-date news, and follow us on Facebook.

Thank you for your support.

Anna Bond

Editor

### THE THREE VILLAGES COMMITTEE

Anna Bond	Rosemary Imroth
Julia Davies	Clare Maynard
Rev'd Dr Sarah Forrest	Lyn Paddon

### DISCLAIMER

All rights reserved. No part of this publication may be reproduced, stored in any retrieval systems or transmitted in any form without prior written permission of the publisher. All items published in good faith and correct at the time of printing.

## CONTACT US

General enquiries: [threevillagesmagazine@gmail.com](mailto:threevillagesmagazine@gmail.com)

Print: [print.threevillagesmagazine@gmail.com](mailto:print.threevillagesmagazine@gmail.com)

Web: [threevillagesmagazine@gmail.com](mailto:threevillagesmagazine@gmail.com)

Online: [www.thethreevillages.com](http://www.thethreevillages.com)

## Contents

FROM THE VICAR	2
OUR HISTORIC CHURCHES: ST JOHN THE BAPTIST	3
ALLOTMENT LIFE	4
PARISH COUNCIL NEWS	5
COMMUNITY SPOTLIGHT	7
POEM BY DAVID LEIGH	8
RECIPE: CHEDDAR CHEESE SCONES	8
UPDATES FROM OUR LOCAL SCHOOLS	9
PUZZLES FROM QUIZMASTER CATHAL BRENNAN	12
MEET A LOCAL: DEBBIE GILBERT	13
CLUBS, GROUPS AND MEETINGS UPDATES	14
KING OF THE MALTINGS	16
ESSEX & HERTS AIR AMBULANCE: A CLOSER LOOK	17
THE DIG AT NETHERFIELD LANE	18
THE WOMBLES OF WARE ABOUTS	19
MEET THE WATERWAYS CHAPLAIN	20
DIRECTORY OF USEFUL NUMBERS	21
BUSINESS ADVERTISEMENTS	22

# The Three Villages Magazine

## FROM THE VICAR

We're getting ready at St John the Baptist Church for the inaugural walk on a new route for pilgrims wanting to travel from London to Walsingham in Norfolk. The new route, published this summer, takes pilgrims up the New River straight past St John the Baptist Church, so we are set to become a stopping post for pilgrims, complete with a Pilgrim Stamp for those wishing to mark their journey.



Walsingham Abbey

Pilgrims began visiting Walsingham following the building of the Shrine to Mary in 1061, and it was one of the major sites of pilgrimage in Europe throughout the Middle Ages. Sadly, the Reformation led to the destruction of the Abbey, but in 1897 the last of the wayside chapels on the route to the Abbey was restored and dedicated for pilgrimage again. The village of Walsingham now has both Catholic and Anglican shrines, and is again a centre for pilgrimage.

Several TV programmes about pilgrimage have been made over the last few years, echoing the revival in ancient pilgrimage routes and the increased popularity, in our busy world, of taking time to walk and reflect, and consider our life and faith. There is insight to be gained even in watching the journey of others. It makes for good reality TV, but what is it all about?

Pilgrimage is about journeying physically and spiritually. It's about the ritual of going somewhere externally that allows us to go on an internal journey as well. We can't see the future, but we can revisit the past and spend time reassessing where life has taken us, what that has done to us as a person, how it has shaped us; and the hope in pilgrimage is that it may allow us to reimagine where we want to head, and find direction from God.

Pilgrimage in Medieval times was dangerous and difficult, but even modern pilgrimage contains an element of discipline and encourages perseverance. There is a reminder in the discomfort of it that we are travelling through life and that perhaps feeling too settled and secure is not good for us. Our Western lives are generally so comfortable and secure, and medical science and the blessing of the NHS shields us from thinking very often about the transience of life; so much so that we have developed a culture in which the denial of death is normal.

If I was to suggest a book about pilgrimage, I might well recommend the beautifully written first novel by Rachel Joyce, *The Unlikely Pilgrimage of Harold Fry*. It tells the story of Harold, who heads out one morning to post a letter to a friend and just keeps walking. The internal journey he goes on is as carefully crafted as the effects of the external journey, and is well worth the read. But perhaps you'd consider your own pilgrimage? There's one just down the road that you can join this month. The BIG one to the Holy Land is on my bucket list, but perhaps I'll start with the one on my doorstep...



Pilgrimage encourages perseverance



Dr Rev'd Sarah Forrest  
Priest in Charge, The 3 Churches Benefice



St John the Baptist  
Great Amwell



St Mary the Virgin  
St Margarets



St Andrew's  
Stanstead Abbots

The 3 Churches Benefice

### OUR HISTORIC CHURCHES: ST JOHN THE BAPTIST

Bob Hunt from Stanstead Abbots Local History Society (SALHS) gives us the next instalment of Our Historic Churches series. This time exploring St John the Baptist, Great Amwell.

Enjoying the pleasant walk along the New River – either from Ware or Stanstead Abbots – you'll eventually come across The Great Amwell Pool. What a serendipity moment that can be for the first-time visitor! And there, towering over The Pool, is the historic church of St John the Baptist.

Great Amwell is rightly proud of its ancient parish church. It has stood on the site for at least 900 years – as the Norman chancel and nave testify. Like its ecclesiastical 'cousins' of St Mary the Virgin, at St Margarets and St Andrew, at Stanstead Abbots, it is built of flint with dressings of chalk and limestone. The tower, which gives such grace and significance to the church's setting, was added in the fifteenth century and this was supplemented, at the same time, by the addition of a belfry and the western (i.e. main) door.



St John the Baptist towering over The Pool



Inside view

The Victorians had a penchant for restoring ancient buildings – and not always for the best! St John's did not escape such do-goodery! In the 1860s, steps up to the chancel were added, box pews removed, a pulpit installed and a form of central heating fitted. Quite a work-over!

Centuries ago there was not the dark, wooded aspect to the church that exists now. But despite its contemporary, shaded countenance the church is always popular for marriage ceremonies with the ensuing photo shoots in the camera-friendly grounds!

Indeed, the grounds and churchyard are places of interest in their own right with some very notable burial vaults and memorials. Most prominent is the large 'Mylne Mausoleum', which was built for his family by Robert Mylne who was the Chief Engineer of the New River Company. Nearby is the frequently visited burial plot of Harold Abrahams (one of the sprinter heroes of the Oscar-winning film, *Chariots of Fire*). The resting places of Theadora and Cornelius Van Hage, the founders of the local garden centre, can also be found.



The Mylne Mausoleum



St John the Baptist bathed in sunshine

A little while back a War Graves Commission plaque was added at the church's gate. This initially was a puzzle as no known war fatality was buried there. But, eventually, in the upper and supplementary burial area of St John's, a headstone was found dedicated to a Corporal Ethel Smith who had died while on service in the West Country.

St John's Church is open to visitors in the summer and provides a delightful place to walk or drive to – why not try it?

*Bob Hunt, Chair of SALHS and Trustee of St James*

# The Three Villages Magazine

## ALLOTMENT LIFE

Strawberries, blueberries, potatoes, broad beans, petit pois, broccoli, cabbages, carrots, cauliflower. This isn't the start of a shopping list. This is the produce that has been grown by my husband and me in our allotment. I applied for an allotment when I first moved to the village five years ago, thinking it will be years before we get to the top of the list, ready for when we retire. Little did I know! On the 4th of June 2021 we signed a tenancy agreement and became the proud tenants of a plot of approximately 240 square yards.



I am not a keen gardener or a green thumb, I have hay fever and don't even like flowers or the outdoors, but I believed that part of settling in and being part of the village was to participate in this great British tradition. So I jumped at the chance.

When we received the plot it was overgrown and hadn't been tended to in a while. It was basically a weed garden with a sad gooseberry bush in it. So we started pulling up weeds. Yard by yard we worked side by side, covering up the exposed earth as we went. By mid June the weeds were four foot high and had 'gone to seed' (not good); we weren't working fast enough.

At the beginning of July we got a free shed, I swore I wouldn't move a shed again as I think I had a small hernia. Like true allotmenters we immediately began to collect

bits and bobs, filling up the shed with stuff that might come in handy 'one day', along with a couple of old chairs and a free lawn mower.

Finally at the end of August we had pulled up the last of the weeds and covered it over. As excited as we were to plant our first seeds, we still had work to do. In September we sunk four (free) concrete posts into each corner and started to build a fence, dividing up the plot into beds and paths with wooden boards. By January we had a chicken wire fence and wood-chipped paths.

On the 10<sup>th</sup> of January we planted some strawberry plants that were donated by some friends. Our first plants in the ground. We had churned up the mud by the shed over the soggy winter, so we decided to put down some patio tiles that our neighbour generously donated.

Each tile weighed the same as a sleeping child and we used about 100 of them. This was the perfect time to get a second shed (I know, another hernia), which we timed with the patio laying. I didn't expect to get so much exercise from tending to our little patch, but I did gain some muscle.



By March the patio was finished and the potting shed was painted. It was time to turn our attention back to the plot. The previous tenant had left us lots of lovely compost so while we had seeds propagating in the potting shed, April was spent sieving the compost to get the stones, lumps of metal and plastic out of it and putting it on our beds. We are using the 'no dig' method championed by Charles Dowding and my Mother-in-law, so we laid cardboard down on the soil and put the compost on top. Would it work? We had our fingers crossed.



At the end of April, in went beans, cabbage, broccoli, carrots, leeks, onions, potatoes and peas. The frost was threatening to make a mockery of us, but green shoots soon became bushy plants and finally food. On the 4<sup>th</sup> of June we got our first strawberries and they were delicious! I have roasted potatoes, made broccoli and cabbage soup, and cauliflower rice. There has also been some strawberry and rhubarb jam made. We didn't plant the rhubarb but a patch of it survived the great weed of 2021 and we are reaping the benefits.

I am really enjoying my allotment experience; the other tenants are friendly and give great advice. The work is never ending. Sometimes I wonder if we can keep it up with full-time jobs, as I originally thought it would be a retirement activity. We are managing for now and we have accomplished so much. I am looking forward to being a wise grand dame of the allotment who can magic something fresh from an old, dried seed.

*Mariesa (Mo) Clarke*

## PARISH COUNCIL NEWS

### Great Amwell Parish Council

The Parish Council continues to meet on the second Thursday of each month in the Parish Hall, Hillside Lane at 8.00pm (except August when there is no meeting).

Since the last update:

- \* Repairs to the Parish Stocks have been completed and they have been re-erected in the St John the Baptist Churchyard;
- \* The Parish Council has made representations to East Herts Council regarding the use of land at Hillside Farm due to on-going concerns that its important green belt status is being eroded through increasing usage for various events, ranging from car boot sales to music festivals, and the Parish Council considers that the cumulative number of such events breach the development control framework;
- \* Little progress has been made on the Joint Neighbourhood Plan (JNP) – as previously reported, part of Great Amwell is, for the purposes of the JNP, within a designated area (Stanstead Abbots) of the District Council's local plan that has a target for housing provision; the JNP aims to identify sites for such development (amongst other things); a finalised proposed JNP will be subject to a local referendum before it can be adopted;
- \* Shipping containers on (green belt) land adjoining The Folly, Amwell Lane have been the subject of report to the District Council as a breach of planning control. The District Council had been requested to take enforcement action without delay to secure their removal; and
- \* A vacancy of the Parish Council arising from the resignation of Parish Councillor Mrs A Hardy is to be filled by co-option.

Details of your parish councillors and recent copies of meeting agendas and minutes can be found on the website (<https://gtamwellpc.org>). If you have an issue of concern that falls within the remit of local government then please contact the parish council ([greatamwellpc@virginmedia.com](mailto:greatamwellpc@virginmedia.com)) to make your views known. You may also wish to contact the District Council directly (<https://www.eastherts.gov.uk/contactusform>).

### St Margarets Parish Council

The Council continues to progress on various projects. We are currently in discussions with both the Canal & River Trust's Art Project and Hertfordshire County Council with proposals to transform the wall under the A414 flyover that runs along the new river and the concrete pillars, with a mural to deter graffiti. We are liaising with Hertfordshire CCTV Partnership to introduce a CCTV system within the parish and are waiting for their instruction as to the next steps. Our recruitment drive for new Councillors continues and we are keen to hear from anyone who is interested in joining.

Please contact the Clerk at [stansteadstmargaretspcclerk@gmail.com](mailto:stansteadstmargaretspcclerk@gmail.com) or see our recently launched website ([www.stansteadstmargaretsparishcouncil.org.uk](http://www.stansteadstmargaretsparishcouncil.org.uk)) for more information about the Parish Council.

### Stanstead Abbots Parish Council

Stanstead Abbots Parish Council organised two community events to celebrate the Platinum Jubilee: a Beacon Lighting Event on Thursday 2<sup>nd</sup> June and a Jubilee Party on Friday 3<sup>rd</sup> June. Both events were very well attended, and the Chairman would like to thank the following organisations and individuals who helped make the events possible: Stanstead Abbots and St Margarets Village Club (particularly Sharon Burrows for all her hard work), Oliver Minton Estate Agents, East Herts District Council, St Margarets Parish Council, French & Jupps, St Andrew's Primary School, More than B'loons, Jeffrey Franklin Agricultural Services, Stanstead Abbots Co-op, All Nations Christian College, Stanstead Abbots Parish Hall and 1<sup>st</sup> Stanstead Abbots Scout Group.

The Parish Council secured a grant in April to pay for the re-painting of all the bollards (90 of them) and all the railings in the High Street. This work has now been completed and has made a big improvement. Repair works to the playground were completed in July from grant money obtained by the Parish Council.

Please visit our website [stansteadabbottsparishcouncil.gov.uk](http://stansteadabbottsparishcouncil.gov.uk) and like our Facebook page for more information.

## The Three Villages Magazine

### Digital Skills group in Stanstead Abbotts

Would you like to know your way around a computer, tablet or phone and gain confidence in the Digital World?

Join our friendly, **free** and volunteer-led group and improve your digital skills now!



Our Digital Champions will show you how to do simple things online such as how to use your devices, online shop, access virtual appointments, and overall, stay better connected with your friends and family!

On every last Friday of the month apart from August and December, 10.30 - 12.00

**Please bring your charged devices along**

**Call 0300 123 1034 to join!**

**Nigel Copping Community Building, Sanville Gardens,  
SG12 8GA**

**Dates:** 29/4, 27/5, 24/6, 29/7, 30/9, 28/10, 25/11/2022

### ST JOHN'S PRIMARY SCHOOL REUNION



Another reunion will be held this year for St John the Baptist Primary School past pupils circa 1945–1955.

This will be held on Wednesday, 28th September at the George IV pub from 11.30am onwards.

Please contact Jennifer on 01438 358404 or 07960 381 339 if you are able to come and would like some lunch too!

Looking forward to meeting again and exchanging all our memories...

*Jennifer Searle*



### ANNE ROBSON HELPLINE

Introducing the Anne Robson Helpline – if you or someone close to you is dying, you can talk to us.

At the Anne Robson Trust we aim to be there to listen to anyone who faces dying or the imminent death of someone they care about. We know that facing the end of life can leave you feeling isolated and alone.

Being able to access support is so important. Gaining knowledge of what may happen towards the end of life and being prepared helps both the person dying and their loved ones to feel a sense of control.

Please visit [www.annerobsontrust.org.uk/helpline-service](http://www.annerobsontrust.org.uk/helpline-service) to find out more.

Calls are free and confidential.

Call us on **0808 801 0688** – we have time to talk.



### COMMUNITY SPOTLIGHT: THE 3 CHURCHES FOODBANK HUB & COMMUNITY HUB DROP-IN

#### The 3 Churches Foodbank Hub

The local Foodbank Hub of the Hertford & Ware Foodbank operates out of St Margarets' Parish Church (St Mary the Virgin) and began life in December 2020, after discussions with Rev'd Sarah Forrest, Priest in Charge of The 3 Churches Benefice of Great Amwell with St Margarets and Stanstead Abbots. The idea of a local hub delivering to people in the villages was taken up by us as a church when a real need became apparent as a result of the pandemic. Since then, we have been regularly delivering Foodbank parcels to people in need within our three villages.

In the early part of 2021, the Rectory took on a new lease of life as East Herts District Council's temporary accommodation for single people and families. As part of this, each new arrival is given a 'welcome pack' of groceries to meet their immediate needs, but also to help them feel welcome and supported when they might be feeling lost or unsettled in a new area.

On a number of occasions now, we have advertised through The Three Villages News & Events blog, as well as on Facebook, for various items we needed including bedding, towels, toiletries and food. The response has always been absolutely amazing: thank you everyone! We have also purchased bedding and kitchen equipment for residents arriving through the Rough Sleeper Outreach Team.

We recently heard from our first homeless guest who we were able to assist. She is now settled, in work and has offered to pay us back for our love and support.

#### The NEW Community Hub Drop-in



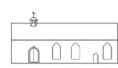
As a church, we felt that we wanted to offer additional support to members of the community who might be struggling post-pandemic. So in June this year, we launched our new Community Hub Drop-in at St Margarets' Parish Church. It runs every Wednesday from 10.30–11.30am.

We have seen a steady stream of people come in and have made connections with a number of people looking for a coffee and a chat, but also a chance to talk about the pressures they are under, and to seek both pastoral support and practical help. We see our role as providing a safe space for people to seek help, and we aim to use our experience to access what is available from us and to signpost or refer to other charities locally. We have been given a telephone by the Citizens Advice Bureau (CAB) with various numbers programmed of our choosing, such as the National Domestic Abuse Hotline, Alcoholics Anonymous, our Local Councillors and others. We have also been given a Chromebook by CAB to enable people to search online for additional support in our quiet, private space.

We have been privileged to obtain three grants, which initially saw our launch in December 2020, and our thanks go to East Herts County Council, and Community Voluntary Services for Broxbourne and East Herts (CVSBEH). Additional thanks go to all our fantastic volunteers and supporters!



St John the Baptist  
Great Amwell



St Mary the Virgin  
St Margarets



St Andrew's  
Stanstead Abbots

#### The 3 Churches Benefice

Lyn Paddon, Foodbank Manager



Three Churches Delivery Hub  
St Mary's Church, Stanstead St Margarets  
Tel: 07487 350918

# The Three Villages Magazine

## POEM BY DAVID LEIGH (1st November 1948 – 15th March 2022)

David, a geologist, avid fisherman and keen bird watcher lived at 21 a High Street, Stanstead Abbots. His poetry, never before published, reflects his knowledge and love of coastal geography and the natural world, as well as a deeply reflective personality. Our sincere thanks go to David's family for kindly letting us publish his poem.

~

### STORM BEACH

Where the tide rip builds  
a steep bermed shingle bank,  
I lie in pensive isolation,  
body moulded to gravel,  
and listen to the pebbles  
hissing in the undertow,  
in endless search  
for tumbled roundness.

I watch the fulmars,  
stiff winged and silent,  
riding the vortices,  
where the sea winds swirl  
fresh from Scandinavia,  
and buffet the beach  
with the insistent bluster  
of a four hundred mile fetch.

On this coast there is energy,  
and power for the taking.  
To be still and silent  
is to grow beyond mere self.  
I listen to the wide waves,  
White noise singing freedom,  
just another wave,  
knowing its own transience.

If you would like to see your work in the next issue of The Three Villages Magazine, please send your poem (550 words maximum) in Word and PDF formats to [threevillagesmagazine@gmail.com](mailto:threevillagesmagazine@gmail.com).

## RECIPE: CHEDDAR CHEESE SCONES

This is my Grandma's recipe, which is why I give the measurements in ounces initially. My siblings and I used to make cheese scones with her as children and now I make them with my own children. You can use Cheddar cheese or a mix of Cheddar and Red Leicester for added colour.

### INGREDIENTS

6 ounces (170g) self-raising flour  
1 pinch salt  
1/3 teaspoon pepper  
2 ounces (56g) fat  
4 ounces (113g) grated Cheddar cheese  
1 beaten egg  
Splash of milk

### METHOD

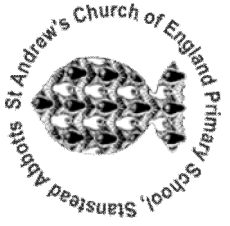
1. Preheat the oven to 180°C / 160 Fan / Gas Mark 4.
2. Sift the flour then add the salt and pepper. Rub in the fat.
3. Add the grated cheese then mix with the egg and milk into a stiff dough.
4. Divide the dough into small balls and flatten slightly.
5. Place on a baking tray and cook for 15 minutes until golden brown.
6. Once cooked, place on a wire rack to cool then store in an air-tight container.



Anna Bond

If you have a tried-and-tested recipe that you would like to share, please email to [print.threevillagesmagazine@gmail.com](mailto:print.threevillagesmagazine@gmail.com)

## UPDATES FROM OUR LOCAL SCHOOLS



### St Andrew's Church of England (VC) Primary School

We are drawing towards the end of our 2021–22 academic year and although COVID-19 has not completely disappeared in the wider world, our school is now running as close to pre-COVID times as it ever has. We continue to provide our children with a full and engaging curriculum, which has included two residential trips. Our Year 5 went to

Stibbington for an environmentally focused three days in the spring term, while our Year 6 children had a more active trip to PGL Liddington in Wiltshire for four days of high-wired adventure. Our younger children have also had trips to wildlife parks or history-based visits or visitors, which have all helped to bring the topics being studied to life. All of our Key Stage 2 children visited the archaeological dig site located on Netherfield Lane, Stanstead Abbots. Whilst on site, they met with several archaeologists who explained the reasons for the dig, spoke about their recent findings and also allowed the children to have a hands-on experience with some of the artefacts. Being able to visit a 'real life' dig site in our own village was an experience that I'm sure the children will remember for a very long time!



This term we have also been able to reinstate many of our wonderful FOSTA (Friends of St Andrew's) led events, which help to enrich the sense of community. These have included a very successful Summer Fête, school discos, cake sales and much-needed ice lolly sales.

In May we celebrated the Queen's Platinum Jubilee with a wonderful school street party led by our Year 6 leadership team. Our Governors joined us for a fish and chip picnic lunch, and all of the children were given a special bookmark to commemorate the day.

A couple of the sporting highlights this term have been the return of our School Sports Day, which was a hugely enjoyable event for all, and a visit from Julie Bradbury who spoke to all of the children about her amazing career in the sport of Badminton. As a double Olympian, a Commonwealth gold medal winner and a former world number one, she was an inspirational speaker and showed that anyone can achieve if they set their minds to it. Perhaps a few future Olympians have been set on a new path?



Finally, as a school we are enormously proud of all of our children in terms of their determination and sheer hard work to make up for any lost learning through the previous two years. Our results for all of the statutory summer tests have been impressive, but our Year 6 children have done particularly well and even beaten our pre-COVID results. We are really proud of them all and we know that they will all excel at their next schools.

*Helen Gillingham*  
Headteacher

# The Three Villages Magazine

## UPDATES FROM OUR LOCAL SCHOOLS



### St John the Baptist CE VA Primary School

Getting out and about has been the theme for the summer term here at St John the Baptist CE VA Primary School.



Our Reception Class enjoyed an outing to the Amwell Nature Reserve as part of their work on 'Our Amazing World'. They quietly spent time in the bird hides, eagerly spotting the different species of birds and watching out for different insects as they walked along the rivers. They were extremely attentive and observant, and came back to school eager to share all that they had spotted.

Our Year 5 and 6 classes excitedly walked down to Netherfield Lane to see the recent archaeological dig for themselves. They were intrigued to learn about all that was going on and see the artefacts that the archaeologists presented to them to investigate. It certainly helped to bring the heritage of our villages alive to them. We would like to thank all those who worked so hard to make the visit such a success.



Years 5 and 6: Trip to the archaeological dig at Netherfield Lane



Years 1 and 2: Colchester Zoo

Years 1 and 2 visited Colchester Zoo as part of their Science topic on 'Animals and their habitats'. They enjoyed learning about the different parts of the world that animals live in and participated in a workshop to learn how animals have to learn to adapt to the habitat they live in.



Earlier in the term we enjoyed a Platinum Jubilee Street Party. Thanks to our excellent catering team, all the children were provided with a picnic style lunch to eat together on picnic tables outside. The afternoon was then spent in house groups celebrating with party games. A wonderful way to celebrate Her Majesty's special day and create some special memories.

*Lydia Hunt*  
Headteacher

## UPDATES FROM OUR LOCAL SCHOOLS



### Amwell View School and Specialist Sports College

#### The 2022 School Show: 'Song and Dance'

This year's School Show was called 'Song and Dance' and every class from Foundation 1 to Students 2 took part (24th–26th May). There were three performances; one during the day and two in the evening. The day performance was during the morning, and parents and carers were invited to come and watch. The evening performances allow parents, carers, family and friends to come and watch the children if they can't make it during the day. The pupils started the day later, at 3:45pm, with dinner alongside their peers and then got ready to perform their act for the audience.

This year we were entertained by Encanto, Frozen, McFly, Katy Perry, 'There was an old lady who swallowed a fly', Rick Astley, Glen Miller, 'Ten in the bed', Aladdin and many more acts. When asked what was their favourite part, parents replied: 'All of it!'; 'It was all fantastic but I would have to say Students 2'; 'Everything'; 'The Choir singing Frozen'; 'We enjoyed all of the show'; and 'The music selection'.

Neil Ward, Headteacher, said 'The pupils were amazing and enjoyed all aspects of the show particularly performing to a live audience again. We are very proud of all of the children and how hard they worked.'



#### Amwell View School Charity Shop

The Amwell View School Charity Shop opened in October 2016 and then expanded into the second shop in 2017. The shop aims to provide meaningful work experience opportunities for young people and adults with learning difficulties.

Amwell View School's Headteacher, Neil Ward, said: 'The shop is located at No.6 High Street in Stanstead Abbots, which is in close proximity to the school, meaning that pupils have the opportunity to walk to the shop with the support of school staff. The shop also supports the school's presence in the community and raises people's awareness of learning difficulties. We are a registered charity (803181) and we use sales to contribute to the continued existence of the charity shop and provision.

We are very proud of how Cheryl Goodey, the Shop Manager, has integrated the shop into the community. Cheryl, and her group of regular volunteers, are very friendly and welcoming. They also encourage the local primary school children to come and shop, for example for Father's and Mother's Day, they will give away books on World Book Day and generally make anyone who comes into the shop feel welcomed.'

The shop is open weekdays, 10:00–16:00. Donations are welcomed at the shop, which can be dropped off Monday–Thursday between 09:00 and 16:30, or Friday between 09:00 and 14:00.

Janet Warrington  
School Business Manager



# The Three Villages Magazine

## PUZZLES FROM QUIZMASTER CATHAL BRENNAN

### QUIZ: GENERAL KNOWLEDGE

1. The TV series *Noel's House Party* was set in which fictional village?
2. What took place in Bethel, New York in August 1969?
3. What word can mean both a type of fish and a place for a bird to stand?
4. Which Dad's Army character was associated with the phrase '*Do you think that's wise?*'?
5. How does something that is soporific make you feel?
6. How is Gordon Sumner better known?
7. In the French comic strip, Asterix is a member of which tribe?
8. The name of which dance translates as 'double step'?
9. In *Only Fools and Horses* what name did Del Boy give to his son?
10. The radio code for which letter of the alphabet is also the word for a river-mouth?

### WORD SEARCH: COUNTRIES OF THE WORLD



AUSTRALIA  
UNITED KINGDOM  
NIGERIA  
HONDURAS  
INDIA  
GREECE  
SWITZERLAND  
MOROCCO  
ARGENTINA  
SLOVENIA  
IRELAND  
MOLDOVA  
SPAIN  
PERU  
JAPAN  
IRAN  
GERMANY  
MALTA

### RIDDLES

1. What can you hold in your right hand but never in your left hand?
2. Before Mount Everest was discovered, what was the highest mountain in the World?
3. What 5 letter word becomes shorter when you add two letters to it?
4. What is red and smells like blue paint?
5. Two in a corner, one in a room but zero in a house. What am I?

### MEET A LOCAL: DEBBIE GILBERT

Debbie Gilbert has lived in Stanstead Abbots for over 20 years, having grown up in Bishop's Stortford. She lives in St Margarets with her husband Barry and their two teenage sons.

Before having children Debbie worked as an IT Support Engineer at an electronics company in Hertford, but decided to be a stay-at-home parent whilst her children were growing up. Always keen to get involved in the local community, Debbie joined the volunteer-run committee of Bobtails Playgroup after she started taking her eldest son to their weekly toddler group, Teddy Club. During her 8 years on the committee, she took on the roles of Chairman and then later Secretary, and was involved with the process of their new premises being built. Debbie also ran Teddy Club for over 4 years and enjoyed welcoming new parents/carers and their babies/toddlers into the group, and organising crafts, games and singing for everyone. When the boys moved on to primary school, Debbie also joined the Friends of Cranbourne School and was often seen manning the chocolate tombola at the school fayres.



Debbie's main passion now is Scouting. Having joined as a volunteer Beaver and Cub Leader in Hoddesdon back in 2014, she transferred to the 1st Stanstead Abbots & St Margarets Scout Group two years later after her sons moved up to Cubs and Scouts. She loves all the outdoor activities they do including hikes and camps, and teaching the young people skills for life. She can often be seen walking with groups through the village either litter-picking, teaching the Cubs about road safety or helping them earn their Local Knowledge badge with a village quiz. Debbie also helps the younger sections if they need an extra pair of hands and has recently helped out a few times at their new youngest section for 4 and 5-year-olds, Squirrels – one of the first in the area. Debbie is constantly learning new skills through Scouting and always encourages others to join in the fun too!

Debbie has recently found new employment as a Charity Administrator for a local charity SPACE. They provide support for families of children with autism, ADHD and other neurodiverse conditions, a cause which is close to Debbie's heart. They are based at The Maltings in Stanstead Abbots but run workshops, support groups and fun sessions for children throughout Hertfordshire. The SPACE team are a lovely group of people to work with and Debbie has settled in quickly. She has taken to stopping into the Co-op on her walk to work as they have a lovely selection of fresh produce and 'grab and go' lunches.

When not Scouting, Debbie enjoys spending free time on walks with family and friends in the beautiful countryside that surrounds our lovely villages, exploring new paths and photographing the amazing scenery and wildlife. And of course most walks end up at a local eatery. The Jolly Fisherman is a firm family favourite with a lovely riverside location, a delicious menu and very friendly staff. Debbie also enjoys watching films, mainly action movies. Saturday afternoons are quite often spent watching Marvel or Star Wars films on the TV with her husband and youngest son with a big bowl of popcorn. She also likes drama and sci-fi series, and has recently caught up with all the seasons of *Stranger Things*. If Debbie could invite four people to dinner, she would pick Tom Kerridge to help cook, Miriam Margolyes and Lee Mack for entertaining conversation and Freddie Mercury for the after-dinner karaoke (a must in the Gilbert household!).

Most people would describe Debbie as kind and helpful with a sense of fun and adventure.

*Paul Stretch*

# The Three Villages Magazine

## STANSTEAD ABBOTTS & DISTRICT EVERGREEN CLUB

We are so pleased that we are still functioning as a club and providing such a wonderful venue for our members. But there is room for many more, so if you are a bit lonely and would like to join us, we meet at the Stanstead Abbots Parish Hall on Monday afternoons from 2 till 4pm.

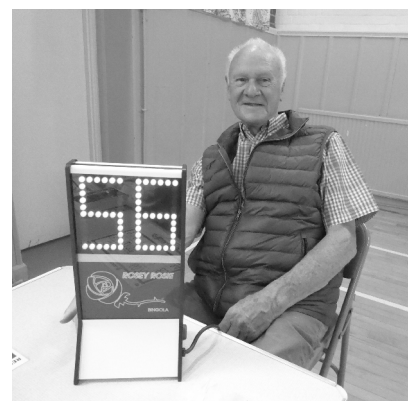
We play Bingo, and to make it easier we have special cards with larger numbers and bright colours – added to which, we have a really special person to call out the numbers (which are also shown in bright red lights!). Our caller is Derek and he is marvellous.

At about 3 o'clock, it is teatime! We have bread and butter, a cup of tea and a plate of cakes to choose from – all for the sum of £1.50!

But there is a problem... many of our members need transport to get to us and to be taken home again at 4pm. We do have a wonderful team of (mostly) ladies who collect and return our members, but we need more volunteers!

If you are available and care enough about our elderly members, we would be so happy if you could share half an hour at 1.45pm to collect and at 4pm to take the same people home – just once a month on a Monday afternoon. Just telephone Ann Hardy on 07850 458366.

*Rosemary Imroth*



## ST MARGARETSBURY TENNIS CLUB



We are a friendly, well-established community tennis club based in Stanstead Abbots at St Margaretsbury Recreation Ground. Tennis is played all year round on our three courts, which have recently benefited from the installation of brand new LED floodlights. There are a variety of sessions on offer, from social sessions to competitions and coaching. Courts are also available for private booking.

We welcome people of all ages and abilities so if you are someone who is rusty and has not played for years or just someone who wants to try a new sport, do not feel nervous about seeing what the club has to offer. We have a number of different membership packages available, including temporary membership if you want to give tennis a try and see if it is for you. Equally, if you are a more experienced, confident player and want to play competitively, there are a number of opportunities to participate in local tennis leagues in autumn and summer.

The club runs a number of social activities during the course of the year, with a Jubilee tea party being our most recent communal activity.

Come and see for yourselves! If you are interested in joining us, why not look at our website at <https://clubspark.lta.org.uk/stmargaretsburytennis> for further details.

*Graham Davies, SMTC Hon Sec*



### REGULAR CLUBS, GROUPS AND MEETINGS IN THE THREE VILLAGES

**1st Stanstead Abbots Brownies:** Mondays 5.45–7pm (Stanstead Abbots Parish Hall) for girls aged 7 to 10 years. Guider in charge: Helen Payne (01920 462676).

**Great Amwell Scout Group:** Squirrels: boys and girls aged 4–5 years old, Beavers: boys and girls aged 6–8 years old, Cubs: boys and girls aged 8–10½ years old, Scouts: boys and girls aged 10½–14 years old. All groups meet at Scout HQ, 142 London Road, Ware SG12 9NH. For details visit [www.greatamwellscouts.org.uk](http://www.greatamwellscouts.org.uk) or call 01920 320142.

**1st Stanstead Abbots & St Margarets Scout Group:** Age groups as above. All groups meet at Scout HQ, Marsh Lane, Stanstead Abbots SG12 8QT. For details visit [www.stansteadabbottsscouts.org.uk](http://www.stansteadabbottsscouts.org.uk) or follow on Facebook, Twitter or Instagram.

**Bingo for the over 60s:** Every Friday 2.30–4pm in Folly View Community Centre. New players welcome, just turn up.

**Evergreen Club:** Every Monday afternoon 2–4pm at the Stanstead Abbots Parish Hall. Transport can be arranged. Contact: 07850 458366 (Ann Hardy).

**Great Amwell Women's Club:** Every 1st & 3rd Wednesday 7.30–10pm at the Parish Hall, Great Amwell. Club Secretary: Dulcie Fordham. Contact number for enquiries: 01920 466689 (Christine).

**Herts Wheelers (Cycling Club):** Weekly Sunday club rides for various abilities normally starting in Ware. Contact [membership@herts-wheelers.org.uk](mailto:membership@herts-wheelers.org.uk).

**The Amwell Society:** Quarterly talks in the Parish Hall, Great Amwell, as well as trips, walks and activities locally. For details of membership contact William Brown on 01920 872450 (Chairman).

**Stanstead Abbots Local History Society:** Chairman, Bob Hunt. Regular meetings for both members and non-members. For details visit: [www.salhs.org.uk](http://www.salhs.org.uk). For membership details email: [admin@salhs.org.uk](mailto:admin@salhs.org.uk).

**St Margaretsbury Tennis Club:** A friendly club with social sessions on Tuesdays, Fridays, Saturday and Sunday mornings, plus a junior section, coaching available, and opportunity to play match tennis in local leagues. For details contact: [secretary@stmargaretsburytennis.co.uk](mailto:secretary@stmargaretsburytennis.co.uk) or come along to a social morning.

**'Armchair Singers' for everyone:** A chance to eat, drink, sing and quiz all in one afternoon. Fun, fun, fun. Held in the Nigel Copping Community Centre every Monday 1.30–3.30pm. Singing for health and well-being. All ages welcome. For more details please contact Gabby Hanley on 07875 221543.

**St Margaretsbury Football Club:** The Recreation Ground, Station Road, St Margarets (near Stanstead Abbots). A Chartered Standard local football club for Youth, Ladies' and Men's football, with youth starting from 6 years upwards in non-competitive leagues, and more competitive as they move up into Under 18s', Ladies' and Men's Football. Contact: Club Secretary at <https://stmargaretsburyfc.leaguerepublic.com/contacts.html>.

**Stanstead Abbots Parish Hall Table Tennis Club:** A friendly club meeting on Friday afternoons from 2pm, and Thursday evenings from 7.30pm with the opportunity to play in local leagues. For further details please call 07841 583265 or email [saphttc@yahoo.com](mailto:saphttc@yahoo.com) – or just come along!

*If you would like to add a club, group or meeting to this list, please send details to [print.threevillagesmagazine@gmail.com](mailto:print.threevillagesmagazine@gmail.com).*

# The Three Villages Magazine

## KING OF THE MALTINGS



Paul King was appointed as Managing Director of French & Jupps in April 2020, taking over the reins from David Jupp who had successfully led the business for over 30 years. Paul had been living most recently in Johannesburg with his family, working for the world's largest brewer AB InBev as their Head of Innovation. Brewing has been Paul's life's passion, and the world of beer has taken Paul and family to all corners of the globe, managing the brewing of Budweiser in Japan and South Korea, launching Budweiser in Russia and growing the Guinness brand across the Asia Pacific region Australia and New Zealand. As Paul says, 'no amount of experience could have prepared him for what was to come in the early months of 2020'. French & Jupps has seen its main raw material, barley, double in price and energy, like we all know from domestic bills, has increased to unprecedented levels; yet amidst these sharp increases it's heartening to see the regional breweries French & Jupps supply slowly recover to pre-pandemic output levels. In addition to making a wide range of roasted malts, French & Jupps proudly offers business space to over 150 local companies, and it's been a humbling

experience for Paul to witness the incredible resilience of these companies operate and evolve, remaining positive and optimistic through the pandemic.

Paul takes an enthusiastic interest in the management of The Maltings Business Centre. Here you will find a rich diversity of business including accountants, solicitors, catering companies, gyms, tailors, surveyors, a vet, printing companies, a physiotherapist, dog grooming, beauticians, councillors and many talented arts and craft companies; if you ever have a specialist need The Maltings can almost always connect you with an expert!



The Maltings is also a wonderful place to escape and enjoy freshly brewed coffee and tasty treats prepared by Nat and Henry at The Maltings Coffee House, open to all. As Paul says, 'it's our little secret; however we do encourage all to give it a try!'



Much of Paul's time is taken up meeting and working with brewers who rely on the wide range of roasted malts French & Jupps proudly make in Stanstead Abbots. 95% of the barley the malt is produced from is grown on local farms within 15 miles of Stanstead Abbots. The resulting range of roasted malts are used to make award-winning beers across the UK, North America and Asia. Familiar brands such as Spitfire, Harvey's Sussex Best, McMullen's and Elgoods Ales, and Hepworth's seasonal beers are all brewed with malt from Stanstead Abbots.



Paul is particularly keen to support the youth in the village and is a governor at St Andrew's Primary School. The French & Jupps team are also particularly passionate about supporting the Stanstead Abbots and St Margaret's Scout Group, who do so much in supporting the development of all ages from Squirrels up to Explorers. Last year the French & Jupp's team rolled up their sleeves and focused efforts on the refurbishment of the Scout Hut, which was in a dire need of repair. If you visit the Scout Hut today you'll find a fantastic new kitchen, the latest LED lighting throughout, and efficient heaters making the large hall area bright and warm throughout the year.

French & Jupps also proudly sponsors Sawbridgeworth Town under 9s' football team, which is a mix of boys and girls. What a fantastic team they are, completing a long unbeaten run at the end of the last season. Paul and the French & Jupps team look forward to enhancing their support for the youth in the local area and playing an ongoing key role in the vibrant community of Stanstead Abbots and St Margarets.

Julia Davies

### ESSEX & HERTS AIR AMBULANCE: A CLOSER LOOK

I was intrigued, humbled and surprised to read the article about Spike and Carrie in the last issue of The Three Villages Magazine. Intrigued because I have the immense privilege of being the Chairman of the Essex & Herts Air Ambulance Trust; humbled because of the extraordinary resilience and fortitude that both Spike and his mother have shown in the face of his appalling injuries; and surprised because I had heard about Spike's case at one of our Trustee meetings but had not realised that he lived locally.

I therefore made contact with Carrie and Spike. Encouraged by both of them, I decided that it would be interesting to write an article for the Magazine about the work of the Trust more generally. I do this in the knowledge that they have no doubt that, were it not for the Essex & Herts Air Ambulance, Spike would probably not be alive and would certainly not have made the remarkable recovery that he has done.

The Essex & Herts Air Ambulance was founded in Essex some 25 years ago. About 15 years ago it expanded into Hertfordshire. It receives limited support from Government, with the vast majority of its funding coming from over 100,000 supporters across our two counties.



We operate two helicopters, one from Earls Colne and the other from North Weald, along with rapid response vehicles to provide cover in conditions when the helicopters cannot fly. Last year we attended over 2,300 missions, just over six every day. Each mission is staffed by a pilot, co-pilot, pre-hospital care doctor and critical care paramedic; and therefore the finest pre-hospital emergency care is available 24-7 for those who live in Hertfordshire, Essex and the surrounding areas.

But all of this costs an immense amount to run; and our annual income requirement, the vast majority of which has to be raised from the people of our counties, is in excess of £9million.

Now some of you may wonder why on earth we are not funded by the Government. The politics of this is way above my pay grade, but I do know that because we are not entangled in bureaucracy we can make decisions that are solely driven by the needs of our patients. Therefore we can provide a service that is second to none.

We are constantly looking at how pre-hospital care can be improved in Essex and Hertfordshire. In recent years we have started carrying blood on board our helicopters, we now fly for extended hours in the summer months, and we have built a new airbase at North Weald. We are currently in the process of purchasing another helicopter (currently we own one and lease one) for which even more funds will need to be raised, we are looking at night flying and I have no doubt that in years to come we will be at the forefront of worldwide advances in pre-hospital care.

So if anyone feels like contributing ... then please get in contact!  
Or visit [www.ehaat.org](http://www.ehaat.org) for more information.

*Jonathan Trower, Chairman of the Essex & Herts Air Ambulance Trust*



**Essex & Herts  
Air Ambulance**

Your local life-saving charity

# The Three Villages Magazine

## THE DIG AT NETHERFIELD LANE

Our heritage is a shared resource; it offers those who live locally a sense of place and community. For some time the value of the participation of communities in archaeological projects has been widely recognised.

Websters have proposed a development on the field behind the Almshouses at the top of Netherfield Lane. As part of the process they agreed to offer a community archaeology project to hopefully discover more about the past use of the field. The programme was to involve the opening of test pits across the site using local volunteers as diggers and finds washers under the supervision of a professional team from the consultants Wardell Armstrong.

We already knew that Mesolithic finds had been made close by in the 1970s and there was hope that exploration in the field could demonstrate the extent of this activity. As the test pits progressed, large amounts of worked ('struck') flint evidenced activity dating from the Mesolithic through to the Neolithic (around 9,000 to 4,000 years ago). It was clear that hunter-gatherers frequented what would then have been a marshy area, next to streams and ponds, making scrapers and blades from the flints.

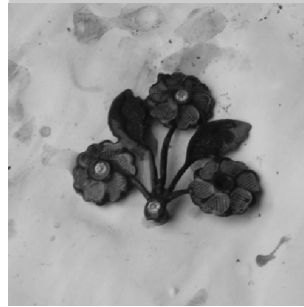
Flint core



Mesolithic blade



Victorian dress jewellery



World War II five cent coin



Only small amounts of ceramics from the Roman and broad Medieval period turned up, and apart from some random finds (including some musket balls), the next main phase of human activity in the field relates to the Victorian period and its more recent use as the village recreation ground. There were many small coin finds (old pennies, sixpenny 'tanners' and thruppenny bits). One remarkable coin find was a Dutch World War II five cent zinc coin. These were minted by the National Socialist Danish government and how exactly it came to the field is a bit of a mystery. In addition to the coins there were some quite beautiful pieces of jewellery whose loss must have been deeply regretted by the owners.

At the very top of the field, a step and course of bricks outlined a building that overlooked the village and field. Further research identified this as the site of a pavilion that served the recreation grounds, which was demolished in the very early 1950s following a spate of vandalism.

For those who were able to participate, we learned a lot about the manufacture, recognition and use of flint tools by some of the earliest people in our area. We had to work safely and methodically, and so came to understand so much about archaeological methodology. We met other village residents, communicating experiences and knowledge. Would we do it all again? Absolutely.

When the site report is made available by the archaeologists, a summary will be available on the Stanstead Abbotts Local History Society (SALHS) website. Finally, a thank you to Websters and Wardell Armstrong for making this possible, with special recognition for the professional team: Pete, Chris, Emma and Andrew. Thanks must also go to the volunteers who put in so much work digging holes, cleaning finds, metal detecting across the site and recording everything with drones. Amazing!

Rob Bennett



Remains of the pavilion

### LITTER: AN ONGOING PROBLEM ONLY PARTLY SOLVED BY THE WOMBLES

For an eternity, the issue of discarded litter blighting towns, villages and the countryside has been an unpleasant fact of life. And things became materially worse during the COVID-19 lockdown.

The lockdown, and government advice to go out and exercise regularly, seemed to contribute to an increase in the amount of discarded litter and this in turn prompted the formation of the Wombles of Ware Abouts, a litter picking initiative set up by husband-and-wife team Andy Murphy and Claudia Kohler.

Having been appalled by the state of our streets and countryside we hit on the idea of asking people to adopt their own street and commit to litter pick it regularly. Claudia immediately went on to Facebook and set up the 'Wombles of Ware Abouts' to do just that. We then pushed the idea on numerous community Facebook sites and were overrun with volunteers almost immediately. A slow trickle of requests to adopt streets at first grew to torrent and by the end of the first month we had over 1,000 'wombles' adopting streets and green spaces in Ware, Hertford and Stanstead Abbots, as well places as far afield as Cheshunt to the south, and Royston to the north. We even set up three other 'Wombles' Facebook groups for Hoddesdon, Broxbourne and Hertford, and the 'Wombles of the Waterways' for the boaters in the community.



In total, we now have about 1,600 wombles registered across the four groups. But given that around 80% of the group are women, and many are young mums, we think that the total number of wombles could be double that as the kids and partners have all embraced the wombling idea. We have even helped local community groups like the Beavers, primary schools and Duke of Edinburgh Award people with the loan of equipment for specific events or badges.

However, it seems that even this large number of wombles is not enough to keep the streets as clean as we all deserve, so if anybody reading this article would like to get involved, just go on to Facebook and ask to join the Wombles of Ware Abouts, let us know on which street you live and which street – probably your own – that you would like to adopt. All very simple. For those people who don't have their own pickers, we have a small supply that we can give to wombles, both new and existing.

The commitment is totally at everyone's discretion. Some people womble to work, or womble back having picked the kids up from school, and some even womble whilst walking the dog. Every little helps and the appreciation and thanks from other people around is palpable and heart-warming.

*Andy Murphy*

## The Three Villages Magazine

### MEET THE WATERWAYS CHAPLAIN



My name is Lorraine Newman and I am the local Waterways Chaplain. Waterways Chaplains are volunteers. They walk the towpath regularly and are there for everyone they meet. That could be families, dog walkers, fishermen, cyclists, canal-side businesses, workers and volunteers, homeless people and of course boaters. In a nutshell the Waterways Chaplains are there for YOU.

Chaplains are there to give a helping hand to any who need it. That could be anything from helping a boat through a lock, comforting a bereaved family or helping with health and poverty issues. Chaplains can be contacted via our website and will respond to any requests for help: [www.waterwayschaplancy.org.uk](http://www.waterwayschaplancy.org.uk).

Waterways Chaplains offer:

- \* **Listening:** listening & confidential ear.
- \* **Signposting:** sign post those in difficulty to local support services e.g. foodbanks.
- \* **Advocates:** act as advocates when a boater needs someone to unravel issues e.g. difficulties with paying licences.
- \* **Emergencies:** take boaters to access emergency medical support e.g. doctor or hospital.
- \* **Practical help:** e.g. washing and drying laundry for boaters, helping out after a (rare) boat sinking.

There are over 100 Waterways Chaplains on the canal network, but only two on the River Lea. We are all members of churches and agree to walk a mile of waterway each week. If anybody would like to know more about becoming a chaplain please contact me via our website.

If you see me on the towpath, do stop to say hello.

Lorraine Newman



## NEED A LOCAL WINDOW CLEANING SERVICE?

- Windows and Conservatories, inside and out
- Clean and clear Gutters and wash Fascias
- Prompt, polite and professional service
- Fully insured, pay online - All areas covered
- For a free no-obligation quote, call today!



**Tel: 07974 645115 or Email: [mark@championcleaning.biz](mailto:mark@championcleaning.biz)**

**≤bark** Award-winning professionals 2 years running! **≤bark**

## DIRECTORY OF USEFUL NUMBERS

### THE 3 CHURCHES BENEFICE

#### Priest in Charge

Rev'd Dr Sarah Forrest 01920 870115  
07488 914972

#### Lay Ministers

Mrs Elizabeth Goldsmith 01920 422065  
Mrs Lynne Griffiths 01920 460668  
Mrs Rachel Melrose 01920 422092

### Great Amwell with St Margarets

Organist: Mrs Jill Hall 01279 842328  
PCC Secretary: Mr Richard Mellor 01920 460474

#### St. John the Baptist, Great Amwell

Churchwardens: Mr Richard and  
Mrs Margaret Mellor 01920 460474  
Assistant Churchwardens: Mr Martin and  
Mrs Sue Vaughan 01920 877779  
Mr Brian and Mrs Julia Brace 01992 447845  
Treasurer: Mr Richard Mellor 01920 460474  
Wedding enquiries: Mrs Alex Richardson 01920 871391  
Baptism enquiries: Rev'd Dr Sarah Forrest 01920 870115

#### St Mary the Virgin, St Margarets

Churchwarden: Mrs Lyn Paddon 01920 487717  
Treasurer: Mrs Lyn Paddon 01920 487717  
Baptism enquiries: Rev'd Dr Sarah Forrest 01920 870115  
Wedding enquiries: Rev'd Dr Sarah Forrest 01920 870115

### Stanstead Abbots

St. Andrew's, Stanstead Abbots  
Organist: Mrs Lynne Griffiths 01920 460668  
PCC Secretary: Mrs Michele Ross 01992 302279  
Churchwardens: Mrs Janet Dance 01920 871262  
Mrs Rosemary James 07730 095370  
Treasurer: Mr Edward Trower 07919 003949  
Baptism enquiries: Rev'd Dr Sarah Forrest 01920 870115  
Wedding enquiries: Mrs Lynne Griffiths 01920 460668

### PARISH COUNCILS

#### Stanstead Abbots

Parish Council Clerk: Ms Sarah Neighbour 07943 602877

#### Great Amwell

Parish Council Clerk: Mr Jeff Hughes  
greatamwellpc@virginmedia.com

#### Stanstead St Margarets

Parish Council Clerk: Ms Christina Whellams 07422 582172

### SCHOOLS

Amwell View School and Specialist Sports  
College, Stanstead Abbots 01920 870027  
St Andrew's C of E (VC) Primary School,  
Stanstead Abbots 01920 870097  
St John the Baptist CE VA Primary School,  
Great Amwell 01920 870135

### CHURCH/PARISH HALLS

Great Amwell Parish Hall: Mrs E. Hawkins 01920 467927  
Stanstead Abbots Parish Hall: Mrs Vicky Burt 07703 402790  
Wilshere Hall, St Andrew's Church:  
Ms M Freeman 01920 870632

### NATIONAL & LOCAL HELPLINES

Police non-emergency number 101  
NHS Telephone Advice Service 111  
Free 24-hour National Domestic Abuse Hotline 0808 2000 247  
Samaritans (Freephone) 116 123  
The Three Churches Foodbank Hub 07487 350918  
East Herts Citizens Advice Service 03444 111 444  
CAP (Christians Against Poverty) 0800 328 0006  
Anne Robson Helpline: Time to Talk 0808 801 0688

If you would like to add a number to this directory, please email the  
Print Editor at [print.threevillagesmagazine@gmail.com](mailto:print.threevillagesmagazine@gmail.com).

## GRAEME BOWIE DESIGNS

Architectural & Planning Consultants  
Residential Architectural Designs



♦ Established 15 years – bespoke house designs, home extensions, barn, loft and garage conversions, refurbishments, new outbuildings i.e. garages, games/pool rooms.

♦ Planning, building regulations, listed building & conservation area applications.

Please call for a chat or to make a free, no obligation appointment **01920 872784 / 07970 377024**  
Email: [graeme@graemebowiedesigns.co.uk](mailto:graeme@graemebowiedesigns.co.uk)

## Nicola's HAIR DESIGNS

07939377536

56 Pepper Hill, Great Amwell

All aspects of hairdressing covered  
Including hair extensions  
and mobile hairdressing if required

## noriko's blossoms FLORIST

Flowers for all occasions,

Friendly and flexible service

19 High Street, Stanstead Abbots

01920 877190

[www.norikosblossoms.com](http://www.norikosblossoms.com)

## Stanstead Abbots Village Club

*High Street, Stanstead Abbots*

Live Saturday Entertainment

& Midweek Events

Drinks at Reasonable Prices

Open weekdays from 4pm;

and 12 mid day at Weekends

**NEW MEMBERS WELCOME**

## POWELL FUNERAL SERVICE

*Serving the community since 1868*

Complete Funeral and  
Monumental Service  
Pre payment Plans

Watton Rd

Ware 01920 463260

83 Railway St

Hertford 01992 509611

79 Burford St

Hoddesdon 01992 470153

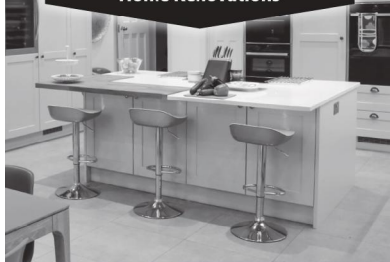
*Funerals arranged in all areas*

Part of Dignity plc. A British Company

## Dobsons

HOME  
Est. 1935

Kitchens  
Bathrooms  
Windows & Doors  
Home Renovations



Browse our new brochure  
[www.dobsonshome.com](http://www.dobsonshome.com)

Talk to our designers  
01992 623066

Visit our inspirational showroom  
128 Turners Hill, Cheshunt, EN8 9BN

Your local friendly carpet &  
upholstery cleaning service



iclean  
CARPETS

Contact David

T: 07824 697 505

E: [David@iclean-carpets.co.uk](mailto:David@iclean-carpets.co.uk)

[www.iclean-carpets.co.uk](http://www.iclean-carpets.co.uk)

## T. W. FENCING AND LANDSCAPES

*Specialists in all types of  
Patios, Fencing, Walling,  
Turfing, Driveways, etc.*

FREE ESTIMATES

07899 787161

01920 870937



*'Small enough to Care,  
Large enough to Cope'*

**Tel: 01279 792472**

**Mob: 07946 617060**

- \* New Builds
- \* Extensions
- \* Loft Conversions
- \* Refurbishments
- \* Conservatories
- \* Brickwork
- \* Driveways / Patios
- \* Garage Conversions
- \* Groundworks

*Free Estimates \* All Work Guaranteed*



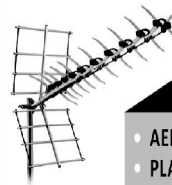
**WILLOWTHORPE**

**CARE HOME**

Residential and dementia care home for older people

**Tel: 01920 871811**

Email: willowthorpe@bmcare.co.uk



## HERTFORD TV SERVICE

**01992 552955** [www.hertfordtvservice.co.uk](http://www.hertfordtvservice.co.uk)

Unit 18,  
Foxholes Avenue,  
Hertford SG13 7JG

FAMILY BUSINESS  
EST 1979

ALL WORK FULLY  
GUARANTEED

- AERIAL & SATELLITE REPAIRS and INSTALLATION
- PLASMA/LCD/LED TV, AUDIO and DVD REPAIRS
- TV WALL INSTALLATIONS and HIDDEN CABLES
- CCTV SYSTEMS IN FULL HD – WATCH ON YOUR TABLET OR SMART PHONE ANYWHERE IN THE WORLD
- WIRELESS BURGLAR INTRUDER ALARM SYSTEMS
- WIFI ACCESS POINTS and DATA NETWORK DISTRIBUTION
- SONOS and HOME CINEMA AUDIO SPECIALISTS



## Farrelly Plumbing™

- All plumbing work undertaken including bathrooms, en-suites, showers, hot water cylinders etc.
- Full central heating installation, boiler exchanges, boiler servicing • Maintenance & repairs



• **FULLY INSURED • FREE QUOTATIONS**

**Call Neil on:**

**07792 838564 or 01920 421799 (home)**

email: [neil@farrellyplumbing.co.uk](mailto:neil@farrellyplumbing.co.uk)



**Conserving Traditional Buildings**

**Tel: 01920 877822**  
**[www.betweentime.uk.com](http://www.betweentime.uk.com)**

Listed Building Specialist for over 35 years



Specialists in the design & build of home extensions & garage conversions

**Geoff Vaughan / 07766 234908**

[Geoff.vaughan@vaughandesignandbuildlimited.co.uk](mailto:Geoff.vaughan@vaughandesignandbuildlimited.co.uk)

**[www.vaughandesignandbuildlimited.co.uk](http://www.vaughandesignandbuildlimited.co.uk)**



## Speedflow Plumbing Services Ltd

EST. LOCALLY FOR OVER 28 YEARS

All aspects of domestic plumbing, both installation and maintenance, and gas heating, including servicing undertaken

- \* GAS SAFE REGISTERED
- \* FREE QUOTES
- \* FULLY INSURED



**No Job Too Small**

Mark: 07831 850499 / Office: 01992 504135

[mark@speedflowplumbing.co.uk](mailto:mark@speedflowplumbing.co.uk)

**[www.speedflowplumbing.co.uk](http://www.speedflowplumbing.co.uk)**

## The Red Lion Pub & Amico Di Amici Italian Restaurant

Pop in for a drink in our 16th century, dog friendly pub. Watch live sport or tackle our weekly quiz.



Enjoy our authentic Italian cuisine, in a relaxed, welcoming atmosphere.

For opening times, menus and bookings, please call us on

**01920 410056**

or visit our website at:

**[redlionamicodiamici.co.uk](http://redlionamicodiamici.co.uk)**

1 High Street, Stanstead Abbots, Ware SG12 8AA



The Walled Garden grows chemical free and nearly certified organic vegetables and fruit, and have pasture-fed cows and sheep grazing our fields.

Since March 2018 we have had community gardening sessions for local families, particularly 3-5 year olds and their parents.

For more information, email [ginitrower@btinternet.com](mailto:ginitrower@btinternet.com) or call 07721 751910. Find us on Facebook (The Walled Garden – Stanstead Abbots).

## DJ Garage Services Ltd



- \* A family run establishment with 50+ years experience
- \* Our reputation is based on honesty and dedication to customer satisfaction
- \* Which? trusted traders
- \* MOTs, servicing and repairs approved by Hertfordshire Trading Standards

See customer reviews at [www.djgarage.co.uk](http://www.djgarage.co.uk)

**Call us on 01920 465431**

(Situating in Amwell Lane)

## P&G CARPENTRY

FREE ESTIMATES

07812 765937 | 01920 870361

SHED/GARAGE TO OFFICE CONVERSION  
BESPOKE DOORS AND WINDOWS  
SOLID WOOD FLOORING  
KITCHENS AND BEDROOMS  
WOOD TURNING, CUSTOM BOWLS, BOXES



TEL. 01920 318110 MOB. 07896 880858

PAW PRINTS GROOMING, UNIT T10, THE MALTINGS  
ROYDON ROAD, STANSTEAD ABBOTTS, WARE SG12 8HG



**FULLY QUALIFIED & INSURED**



OCN LEVEL 3 DIPLOMA FOR DOG GROOMING (OFQUAL REGULATED QUALIFICATION)

## YARHAM CONSTRUCTION

Covering all aspects of construction

- one-off new builds •
- large extensions • barn conversions •
- refurbishment work •

**07702155216**

[mjyarham@btinternet.com](mailto:mjyarham@btinternet.com)

Pre and post-natal qualified  
Orthopaedic conditions certified  
[www.flow-pilates.co.uk](http://www.flow-pilates.co.uk)

**PILATES**

**Develop Strength**

**Tone muscles**

**Ease back pain**

Monday: 19.45-20.45 - Parish Hall, Stanstead Abbots  
Tuesday: 9.30-10.30, Nigel Copping, Stanstead Abbots  
Wednesday: 18.30-19.30, Hale Physiotherapy, Hoe Lane, Ware  
Thursday: 12.00-13.00 - Much Hadham Village Hall, Oudle Lane  
19.00-20.00 Kingshill Infant School, Heath Drive, Ware  
Mixed Abilities

Booking Essential:  
[info@flow-pilates.co.uk](mailto:info@flow-pilates.co.uk)

[www.tmphotography.co.uk](http://www.tmphotography.co.uk)

**Passports / Visas**  
Family Portraits Weddings  
Headshots Babies Pets  
Products Commercial

**01920 318040**

Your Local Photography Studio  
**Unit 41 The Maltings**

Welcome to  
Little Blue Van  
Nursery!

- \* Idyllic countryside location
- \* Ages 2 – 5 years
- \* Safe and secure
- \* OFSTED rated GOOD
- \* Fully qualified, caring staff
- \* Flexible, affordable sessions
- \* 15 hours FREE childcare per week
- \* 30 Hours funded childcare per week

**CONTACT US NOW  
TO RESERVE A PLACE**

07770 963701  
[admin@littlebluevan.co.uk](mailto:admin@littlebluevan.co.uk)  
[www.littlebluevan.co.uk](http://www.littlebluevan.co.uk)

## PUZZLE ANSWERS (from Page 12)

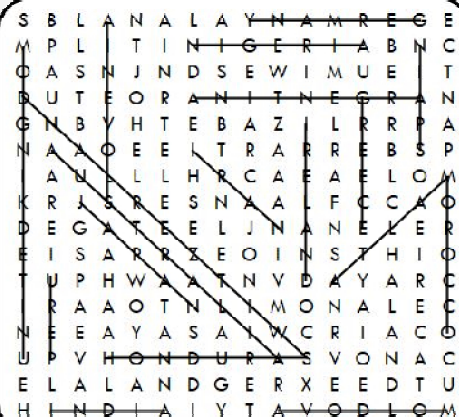
### QUIZ

- |                    |               |
|--------------------|---------------|
| 1. Crinkley Bottom | 6. Sting      |
| 2. Woodstock       | 7. Gauls      |
| 3. Perch           | 8. Paso Doble |
| 4. Sergeant Wilson | 9. Damien     |
| 5. Sleepy          | 10. D (Delta) |

### RIDDLES

- |  |                 |
|--|-----------------|
| 1. Your left hand                                | 3. Short        |
| 2. Mount Everest – it just wasn't discovered yet | 4. Red paint    |
|  | 5. The letter R |

### WORDSEARCH



PROUD SPONSORS  
OF  
The Three Villages Magazine



# Willowthorpe

Stanstead Abbots, Hertfordshire

*Formerly a private country house, Willowthorpe is situated in the centre of the charming and picturesque Village of Stanstead Abbots. Set in 5 acres, the building has been tastefully extended and enjoys an exclusive riverside location along the banks of the River Lea.*



@bandmcare



@bandmcare



@bmcarehomes

T: 01920 871811 | E: [willowthorpe@bmcare.co.uk](mailto:willowthorpe@bmcare.co.uk) | W: [www.bmcare.co.uk](http://www.bmcare.co.uk)  
Willowthorpe Care Home, High Street, Stanstead Abbots, Hertfordshire, SG12 8AS





**No risk - No fees - No admin**



**Help your fundraising grow**

### How does it work?



Sign up and get **your own page** on the lottery website



Send your supporters to your page to **buy tickets**



Your good cause keeps 50% of all ticket sales!



Players can **WIN** prizes up to the **£25,000 jackpot!**

### Why should you join?



There are **NO** costs to you, ever.



Regularly updated **marketing materials**



Access to your own **online dashboard**



Funds paid directly to your bank **monthly**

w: [www.easthertslottery.co.uk](http://www.easthertslottery.co.uk)

e: [support@easthertslottery.co.uk](mailto:support@easthertslottery.co.uk)

t: 01279 912 777

**Scan the QR code to find out more and sign up! ➡**

